

DEVIZES RFC

SENIOR MEN REPORT

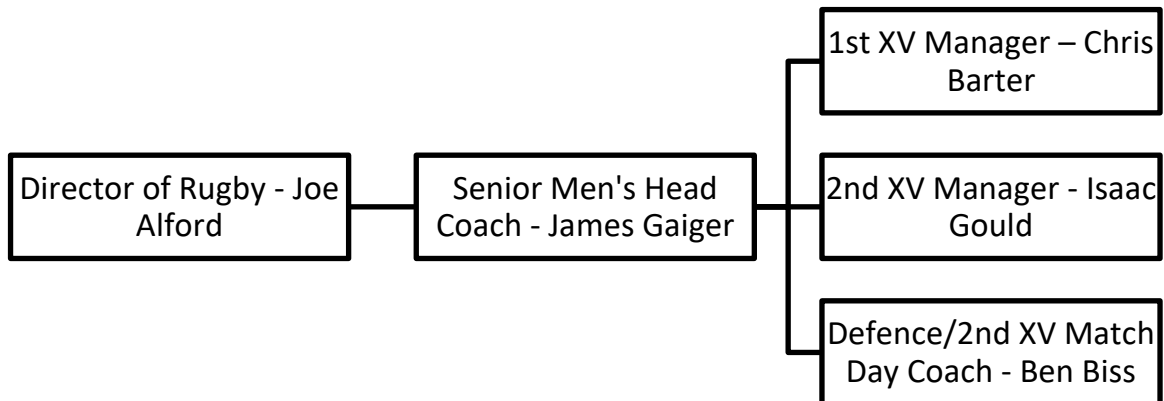
2022/23 SEASON

Contents:

- 1.1 Senior Men's Structure (page 2)**
- 1.2 Summary of 22/23 Season Goals (page 2)**
- 1.3 One Squad (page 3)**
- 1.4 Social Rugby (page 4)**
- 1.5 Performance (page 4)**

1.1 Senior Men's Structure

The following coaching and management structures were agreed in June 2022:



***Note that Isaac Gould stepped down from his role in October 23 and Craig Hurcombe took over.**

1.2 Summary of Senior Men's 22/23 Season Goals

- Maintain 'One Squad' ethos
- Provide social rugby opportunities
- Both 1st and 2nd XV to consolidate in higher league i.e. avoid relegation.

1.3 Goal: Maintain ‘One Squad’ ethos

The gradual improvements in performance over past seasons have in large part been due to a cohesion throughout the senior men’s playing section, with equal emphasis on preparation for both 1st XV and 2nd XV match day squads, as well as improved integration with the colts side. This has allowed not only the 2nd XV to play with greater structure than previous seasons, but made transitioning players between the two match days squads much easier.

‘One Squad’ Indicators of Progress

- Director of Rugby led two 2nd XV match days and Head Coach led two.
- Development XV had a match day coach at all but two fixtures.
- Development XV match day coach joined the 1st XV for three match days.
- Several 2nd XV games recorded for video analysis.
- Attention was given to all players during training.
- 57 players appeared for the 1st XV this season, including several second team ‘regulars’. 103 players appeared for both teams.
- Seven current Colts players were given their senior debuts, including 3 x 1st XV debuts.

1.4 Goal: Offer Social Rugby Opportunities

One vets fixture was arranged in the 22/23 season, but unfortunately the opposition had to withdraw from the fixture a couple of days before due to poor availability.

Efforts to arrange further social fixtures was hampered by large availability issues with the 2nd XV – over 80 players played for the team over the season. There were many players involved at times that may be categorised as ‘Social’ i.e. unable to commit to training or playing regularly, with no specific goal of improvement as a player. However, we are still at the stage where there are not enough of this type of player to field a regular 3rd/Social XV.

1.5 Performance Goals

1st XV

In an unknown league it was agreed with the players in a pre-season meeting that our primary goal was to consolidate at level 6 and avoid relegation. This was comfortably achieved with an 8th place finish; 29 points clear of relegation and only two points from the top half of the table.

There were several opportunities missed to gain extra league points, but those created learning opportunities to a squad new to the challenge of level 6 rugby, and will no doubt carry them well into next season.

The 1st XV also enjoyed a run to the Papa Johns Community Shield Semi-Finals, losing to

eventual winners Beaconsfield.

The below table charts the 1st XV progress through the past seasons:

Team/Season	Coaches	Level	Final League Standing	League Points per Game	Points Scored Per Game	Points Conceded per Game
1 st XV 17/18	JK	7	8 th	2	16.95	26.68
1 st XV 18/19	JA, JG	7	8 th	2.5	24.59	19.50
1 st XV 19/20	JA, JG	7	4 th	2.7	26.16	20.00
1 st XV 21/22	JA, JG, BB	7	1 st	4.5	31.04	15.59
1 st XV 22/23	JA, JG, BB	6	8 th	2.2	22.50	30.00

2nd XV

The goal for the 2nd XV was to maintain their new position in top tier county rugby, ensuring that players were offered good quality rugby, and provided a stepping stone to 1st XV rugby for those who desire it.

Despite a difficult season that saw huge availability issues - with one game forfeited and one played under 'game on rules' - this goal was achieved by a margin of 27 points, with key wins and a strong end to the season.

Team/Season	Level	Final League Position	League Points per Game	Points Scored Per Game	Points Conceded per Game
2 nd XV 17/18	9	7 th	1.7	24.50	25.95
2 nd XV 18/19	9	6 th	2.5	24.27	22.81
2 nd XV 19/20	9	4 th	4.0	31.66	16.66
2 nd XV 21/22	9	2 nd	3.4	21.07	13.00
2 nd XV 22/23	8	8 th	1.4	16.38	22.19